

.....

الفروق في مركز التحكم وتقدير الذات بين ذوي صعوبات القراءة والعاديين من تلاميذ المرحلة الابتدائية

الملخص

()

:

()

-1

-2

-3

(80)

(80)

(528)

*

$(0,001=\alpha)$ \vdots -1

$(0.001=\alpha)$ \cdot -2

\cdot -3

.

-1

(%85)

.(Lerner,2000)

.(Mercer ,1997)

.

.(240 1993)
(Self Esteem)

.

.(249 1993)
(Locus of Control)

(Julian Rutter)

()

)

(1994

-2

-1-2

(())

The National Joint Committee on Learning) :

(Disabilities , NJCLD

(1997)

" " ()

.(Lerner , 2000)

.

%85

-2-2

.(1999) .

-3-2

:

1993) .

.(367

-1-3-2

()

.(1985)

:

:(Orton)

-1-3 -2

1994

Orton

:

()

:

.(NCLD, 1996)

(Frost and Emery)

-3-3-2

(Frost and Emery, 1995)

). .

.(1999

-4-2

.

.(1985) .

(1966) (Rotter)

(Internal arists)

()

(Lefcourt)

(External arists)

(Pharse)

.(248 1994)

(1985) Rohner روهنر

.(Patterson 1987)

(1982) Morris

.(Morris 1982)

/

(1972) weiner

(2)

(1) :

(4)

(3)

.(6 1991 ,)

.(Morgan 1986, P.10)

.(503 1984) .

-5-2

(1978) Hallhan et.al

(1975) Sligman

.

.

()

()

.(393 390 1988) .

- 6-2

" "

.(1987)

(W.James) "

:

.(Corsin&Auerbach,1996 P.809) (

Stake .

(Stake,1994, P.57-58)

:	:	-1
.	:	-2
.	:	-3

(Corsin&Auerbach,1996, P.810)

(Self -Esteem)

(Self-Esteem)

(Self-Concept)

.	:	-1
.	:	-2
.	:	-3

(Self-Esteem)

(Self-Concept)

" "

.(Roy,1994)

.

) () (

.(Michael, 1984)

.(Roy,1994)

.(Omizo et. al, 1985, P.389)

-7-2

(1989) Saracogly et al

.(188 1993) .

(1990) Peggy

1994) .

.(252 - 250

(1976) Mckeachie

(Muse , 1992, .

.P.13)

.(Hall , et. al , 1993, P 24) .

Hall & et al, (1993)

%68

.(Hall , et. al , 1993,P.24)

-3

(394 1988)

()

()

()

.....

.

'
(1993) , ,

(Tollefson , et. al , 1982) .

...

.

.

-4

-5

:
() (1)

(2)

(3)

-6

(0,001= α) -1

(0.001= α) -2

-3

(0,001= α)

.....

$$\begin{aligned} & -7 \\ & -1-7 \end{aligned}$$

$$-2-7$$

$$-3-7$$

$$(75) \quad (21)$$

$$-4-7$$

$$(75) \quad (15-9)$$

$$-5-7$$

$$(6)$$

2006 - -

(75)

-8

(160)

(80)

(80)

(528)

2005./2004

-9

—

—

:

-1-9

(Lewis and Patterson ,1989)

12-8

(24)

(IAR)

,

.

(Crandall, 1995)

,

(Tarnowski and Nay ,1989)

(/)

(9-7)

(50)

:

(LD)

:

(14)

(ADHD)

:

(12)

,

(12)

:

(12)

(Nowiciki and Streckland, 1973)

(ADHD)

-2-9

(Tollefson, et. al, 1980)

(35)

()

(35)

()

(Battle and Blowers, 1982)

(158)

(Patten, 1983)

(88)

.

(Cooley and Ayres, 1988)

(47)

(46)

12

(IAR)

(Piers-Harris, 1984)

.(1965)

(shen & peterson,1999)

(497)

(19-12)

(Robinson & Tracey,2001)

(221)

(12-8)

- 3-9

-1-3-9

(1994)

		(140)	
	(456)		(11 -10)
:		(70)	
		.	(70)
	(1992)		
		:	
			-1
	(0.01)		-2
.			
	(0.01)		-3
.			
			-4
		.()
		(1998)	
	(61)		
		(60)	
			(464)
	:		
			.1

.

.2

.3

-2-3-9

(Rogers and Saklofsk, 1985)

(45)

(45)

(12-7)

(Mulcahy and Peat, 1990)

(209)

.()

(214)

(121)

:

.1

.2

.3

-3-3-9

-

-

-

-

:()

-

:

-

-4-3-9

.....

-10
-1-10

-2-10

2005/2004

(528)

:

(1)

(1)

	72		1
	43		2
	74		3
	67		4

	64		5
	67		6
	75		7
	69		8
	528	8	

(80) (160)

(80) ()

-1-2-10

-1-1-2-10

- 1

(1997)

(100)

- 2

- 3

(10-9)

- 4

- 5

-2-1-2-10

(6)

- 1

(100)

- 2

()

(10-9)

- 3

.

- 4
-3-1-2-10
- 1

- 2

(9) (6) (15) -
 (21) : -
 (160) : -
 (2) 80 80

(2)

38	
42	
80	
80	

160	
-----	--

-3-10

-

:

)

:(

-1-3-10

(1997)

-1-1-3-10

%96

(75)

-2-1-3-10

(1997)

()

:

.

-3-10

(/)

(Sephen Nowicki)

(Bonnie Strickland)

(1991)

-1-2-3-10

(16 - 8)

)

(4)

(

-2-2-3-10

(10)

(7)

(0.85)

(40)

-3-2-3-10

(25-15)

-4-2-3-10

()

.()

-3-3-10

.(1992)

-1-3-3-10

.

(18-6)

(4)

-2-3-3-10

(10)

%90

-3-3-3-10

(40)

(0.89)

-4-3-3-10

()

-5-3-3-10

()
 27 23 22 20 14 13 12 7 4 3 2 1 - :
 .28
 15 11 10 9 8 6 5 - : ()
 .30 29 26 25 24 21 19 18 17 16

-6-3-3-10

:
:

:

:

:

-

-

-7-3-3-10

:

(Cluster Analysis) .1

(One way ANOVA) .2

.

(Bonferroni)

(Pearson)

.3

(Fisher's Z - test)

-11

:

(Cluster Analysis)

(38)

(42)

(2)

15.6	24.4	12.6		(38=)
3.8	3.5	2.8		
18.8	22.2	23.1		(42=)
3.7	3.2	3.00		
16.00	23.1	18.8		(80=)
3.7	3.5	5.8		
22.6	15.7	51.8		(80=)
3.1	3.6	2.1		

(2)

:
(0,001= α)

-1-11

.....
:

(3)

(3)

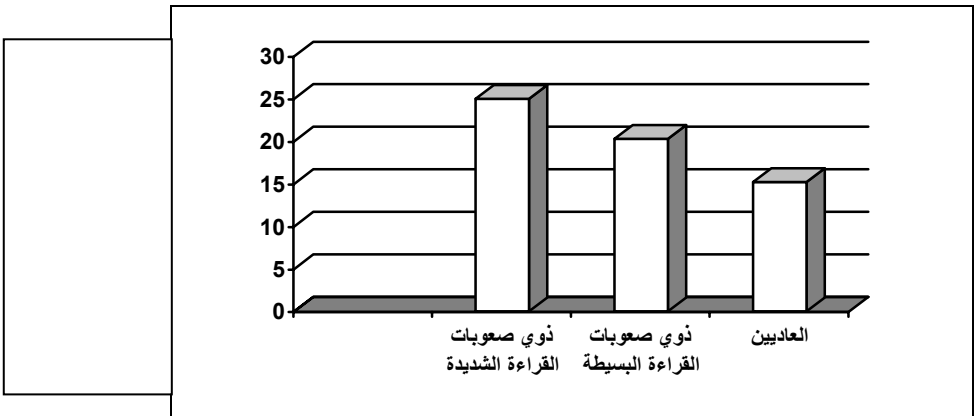
0.000	84.767	916.586	2	1833.173	
		10.813	157	1697.773	
			159	3530.946	

(3)

(0,001= α)

(2)

(1)



(1)

(Bonferroni)

(0,05= α)

(0.001= α)

:
(0.001= α)

-2-11

.....

..... : (4)

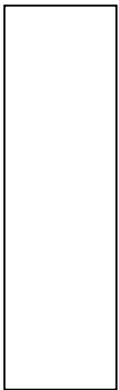
(4)

0.000	57.256	574.122	2	1148.245	
—	—	10.036	157	1575.766	
—	—	—	159	2724.011	

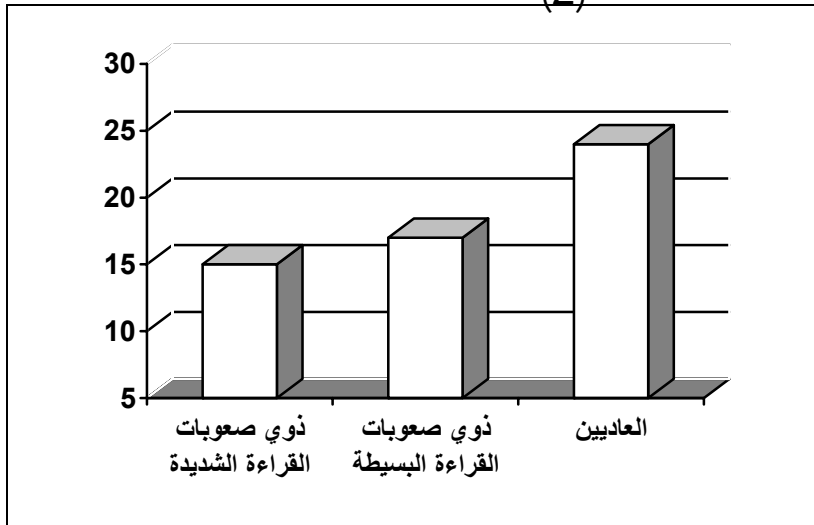
(0.001 = α)

(4)

(2)



(2)



(2)

(Bonferroni)

(0.05= α)

(0.001= α)

(0,001 = α)

:

-3-11

.

8.7189=) 0.001= α

0.782 -=

0.523 -=

(59=

(58= .4.355=) 0.001= α

.(2.3702=)

(0.05= α)

(%61)

%27

-12

-1-12

:

(Lewis & patterson, 1989)
: .(1998)

(Tarnowski & NAY, 1989)
(1994)

-2-12

.

(Cooley & ayres , 1988)
(1998)

(Patten, 1983)
(1994)

-3-12

(1998)

-13

:

(1

(2

(3

(4

() (1999) -

3 (1984) -

(1987) -

" (1993) -

"

.(228 - 181) (1) 2

" (1994) -

"

2

.(287 - 239) (3)

-

" (1985) -

.(5) 6

"

.....

(1993) -

(1988) : (1996) -

:" (1993) -

" (265 – 239) (2) 3 (1998) -

(1991) -

: 4 -

- Battle, J. & Blowers, T. (1982). Alongitudinal comparative study of the self – esteem of students in regular and special education classes. **Journal of learning disabilities**, 15(2),101-102.
- Cooley, E. j & Ayers, R. R (1988) Self-concept and success/ failure attribution of non-handicapped students and students with learning disabilities. **Journal of learning disabilities**, 21(3),174-178.
- Corsin, R. and Auerbach, A. (1996). **Concise Encyclopedia of psychology**. London: John wiley & sons.
- Hall, C. W, et. al.(1993). Social,Emotional Factors in students with and without learning disabilities. Paper presented at the annual convention of the National ASSOCIATION of School performance psychologists, Washington Dc. (from Eric Abstratcts, 1982-1991, Abstract No. ED 370284).
- Lerner, J. (2000). Learning disabilities, Theories, diagnosis, and teaching strategies. (8th ed). Boston, USA: Houghton Mifflin company
- Lewis, S. K & Lawrence Patterson, E. (1989). Locus of Control of

- children with learning disabilities and perceived locus of control by significant others. **Journal of Learning Disabilities**, 22(4), 255-257.
- Mercer, C. (1997). *Student with Learning Disabilities*. (5th ed), USA: Prentice-Hall.
 - Michael, E. B. (1984). *Rational Emotive Therapy with Children and Adolescents*, 2nd, New York: John Wiley & Son, USA.
 - Morris, C. G. (1982). **Psychology and Introduction**, New York: Publishing Hall, Inc.
 - Morgan, S. R. (1986). Locus in children labeled learning disabilities behaviorally disordered, and learning disabled, behaviorally disordered. **Learning Disabilities Research**, 2(1), 10-13.
 - Mulcahy, L. W. & PEAT, D. (1990). Perceived competence, self concept, and locus of control for high ability students. **Canadian Journal of Special Education**, 6(1), 42-49.
 - Muse, A. F. (1992). The Difference of self-concept of the labeled and non-labeled students. (report No. e.C 302880). Illinois: Chicago Public School. (From Eric Abstracts, 1982-91, Abstract No. ED 368125).
 - Omizo, M. M.; Amrikaner, M.J., & Michel, W. B. (1985). The Coopersmith self-esteem inventory as a predictor of feeling and communication satisfaction toward parents among learning disabled, emotionally disturbed, and normal adolescents. **Educational and Psychological Measurements**, 45, 389-395.
 - Patten, M. D. (1983). Relationships between self-esteem, anxiety and achievement in young learning disabled students. **Journal of Learning Disabilities**, 16(1), 43-45.
 - Patterson, N. A., (1987). Conceptual differences between internal-external locus of control and causal attribution. **Psychological Reports**.
 - Rogers, H., & Saklofsky, D. (1985). Self-concepts, locus of control and performance expectations of learning disabled children. **Journal of Learning Disabilities**, 18 (5), 273 – 277.
 - Roy, F. Baumeister, (1994). **Self-esteem The puzzle of low self-regard**. New York, USA: Plenum Press
 - Shen, Y., & Peterson, G. (1999). Effect of Chinese parents' practices on their adolescent children's school performance, moderated by student's conformity to parents, self-esteem, and self-efficacy. Paper presented at the Annual Meeting of the American Educational Research Association, Montreal, 1 – 15.
 - Stake, J. (1994). Development and Validation of the six – Factor self – Concept scale for Adults. **Educational and Psychological Measurement**, 54 (1), 56 – 72.
 - Tarnowski, K. J., Nay, S.M. (1989). Locus of control in children with Learning disabilities and hyperactivity: a subgroup analysis. **Journal of**

.

learning disabilities, 22(6), 381 – 383.

- Tollefson, N, et. al. (1982). Attribution patterns of Learning Disabled adolescents. **Learning Disability Quarterly**, 5 (1), 14 – 20.

«2005/7/2	2005/3/17	»
-----------	-----------	---

(1)

A Locus of Control Scale for Children

(1991)

[Empty rectangular box]

: : :
 : : :
 : : :
 . () () . () () .1
 . () () . () () (40) .2
 . () () . () () (x) .3
 . () () . () () .4
 . () () . () () .5

	x
x	

()
()

.

		.1
		.2
		.3
		.4
		.5
		.6
		.7
		.8
		.9
		.10
		.11
		.12
		.13
		.14
		.15
		.16
		.17
		.18
		.19
		.20
		.21
		.22
		.23
		.24
		.25
		.26
		.27

		.28
		.29
		.30
		.31
		.32
		.33
		.34
		.35
		.36
		.37
		.38
		.39
		.40

.

(2)

Self – Esteem Scale for Children

:

[Empty rectangular box]

:

:

:

:

:



:

.()

()

:

	()	.16				.1
	()	.17			()	.2
		.18			()	.3
		.19				.4
		.20				.5
		.21			()	.6
	()	.22			()	.7
	()	.23			()	.8
	()	.24			()	.9
	()	.25				.10
	()	.26				.11
	()	.27				.12
		.28			()	.13
	()	.29			()	.14
	()	.30			()	.15